

HR15RTH | Boom Lift

Working height Horizontal outreach

Closed length	6.35m
Closed height	2.10m
Closed width	2.00m
Platform size	1.80m x 0.85m
Rotation	355°
Max SWL	225kg
Weight	4800kg

15.7m
9.4m

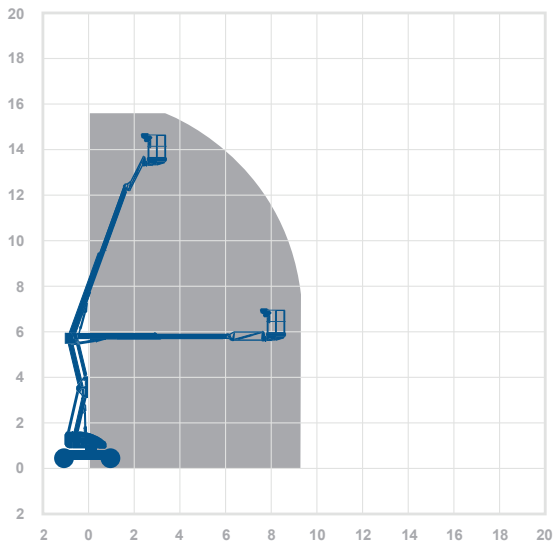
Alternative machines

Z45FES

Manufacturer

Niftylift

Working envelope



15.7m 9.4m

Key standard features



Optional extras



0345 745 0000

nationwideplatforms.co.uk

**Nationwide
Platforms**
A **LOXAM** Company

Understanding this Product Specification Sheet

This product specification sheet is designed to help you better understand the capabilities and key features of the piece of equipment and whether it will meet your requirements.

The working envelope with height/reach indicator provides a quick visual reference to assist your equipment selection.

If you are unsure about any aspect of this piece of equipment, or would like more information to assist with your selection, please call our expertly trained staff on **0345 745 0000**

Height and outreach

Working height Horizontal outreach

AMWP11.5-8100 | Boom Lift

Working height	11.2m	Alternative machines
Horizontal outreach	3m	Star 10
Closed length	2.55m	Star 10A
Closed height	1.90m	Manufacturer
Closed width	1m	Orlth
Rotation	345°	
Platform height	0.2m	
Max SWL	200kg	
Weight	2000kg	
Deck size	0.62m x 0.870m	

Working envelope

11.2m
3m

Standard features

- Battery power
- Diesel power
- Lithium battery
- Hybrid power
- Dual fuel option
- Gas power option
- Rough terrain (2 wheel drive)
- Rough terrain (4 wheel drive)

Optional extras

- Generator
- Camera pod
- Circular camera cage
- Wendy lighting frame

0345 745 0000
nationwideplatforms.co.uk

Standard features

- | | | | |
|-------------------------------|-------------------|--------------------------|---------------------------|
| Battery power | IPAF licence type | Straight telescopic boom | Self drive |
| Diesel power | IPAF licence type | Non-marking tyres | J1B rotation |
| Lithium battery | IPAF licence type | Outrigger legs | IPAF driving licence type |
| Hybrid power | IPAF licence type | Maximum people in cage* | Power to platform |
| Dual fuel option | IPAF licence type | Push around vehicles | Generator |
| Gas power option | Tracked | Operator powered | |
| Rough terrain (2 wheel drive) | Mast boom | Indoor use only | |
| Rough terrain (4 wheel drive) | Articulating boom | Indoor/Outdoor | |

Optional extras

- | | | | |
|---------------|--------------|-------------------------------|----------------------|
| SkySiren® | SkyRakPlus® | SkyRakEdge™ | Generator |
| SkySiren® PCS | SkyRakBoom® | SkyShield™ | Camera pod |
| SkySentry® | SkyRakMulti™ | SkyScreen™ | Circular camera cage |
| SkyRak® | SkyTel™ | Material handling attachments | Wendy lighting frame |

*The number refers to indoor or outdoor uses. Call us for details.

Please note that all technical information referred to in this document is intended for guidance purposes only and does not act as a replacement for the manufacturer's specification or equipment user guides which should be referred to prior to placing your order. No responsibility can be accepted in the event that this document contains any errors, omissions or data that is different from that in the manufacturer's specification or equipment user guides.